

contemporary looks

Add elements of style and fashion to your project with the shimmering appearance of the Electro™ range of powder coatings. With an ultra low sheen, silky, anodised look, each of the Electro™ range palette of colours is cleverly designed to subtly change in appearance, as light conditions alter throughout the day.

ELECTRO™ POWDERCOAT RANGE



ELECTRO™ POWDER COAT RANGE PERFORMANCE GUIDE	
Dulux Product	Electro™ Powder Coat range
Dulux Electro™ Warranty: Film Integrity	20 Years (Available when applied by a Dulux Registered Applicator)
Dulux Electro™ Warranty: Colour Integrity	15 Years (Available when applied by a Dulux Registered Applicator)
Muriatic Acid Resistance	PASS
Mortar Resistance	PASS
Nitric Acid Resistance	PASS
Detergent Resistance	PASS
Window Cleaner Resistance	PASS
General stain resistance, eg: wood tannins	PASS
Impact Resistance	PASS
Flexibility	Good = 80 inch/lb
Humidity Resistance	PASS
Salt Spray Resistance	PASS
Weathering Resistance	PASS
Abrasion resistance	PASS
Boiling water film Adhesion	PASS
Dry Film Hardness	PASS 2H to 3H
Dry and Wet film adhesion	PASS

For full details of all test criteria & results please refer to the Electro™ Powder Coat range Technical Data sheets.



Worth doing, worth Dulux.

FOR SPECIFIC ADVICE ON YOUR NEXT PROJECT AND TO ORDER SAMPLES PLEASE CONTACT US ON:

New Zealand

Dulux Powder & Industrial
Coatings NZ
31B Hillside Road, Glenfield,
Auckland, New Zealand
PO Box 10 1886, North Shore
Mail Centre
Phone: 09 441 8244
Toll free: 0800 800 975
Fax: 09 441 8242

Australia

Dulux Powder
& Industrial Coatings
1-15 Pound Road,
Dandenong South,
VIC 3175 (1st floor)
Customer Service: 13 24 99
Customer Service Fax:
1800 804 649

Singapore

DGL International
Powder and Industrial Coatings
No 100, Pasir Panjang Road,
#02-10, Singapore 118518
Mobile: +65-98337803
Office: +65-68381011 / 1010
Fax: +65-67335125
E-mail: pearly.kang@dglinternational.com

OR VISIT

www.duluxpowdercoatings.co.nz

www.duluxpowders.com.au

www.dglpowders.com

Dulux and Worth doing, worth Dulux are registered trade marks and Electro and the Electro Device are trade marks of DuluxGroup (Australia) PTY Ltd. Any advice, recommendation, information, assistance or service provided by DuluxGroup (Australia) Pty Ltd or its related bodies corporate (hereinafter collectively referred to as "DuluxGroup") in relation to goods manufactured by it or their use and application is given in good faith and is believed by DuluxGroup to be appropriate and reliable. However, any advice, recommendation, information, assistance or service provided by DuluxGroup is provided without liability or responsibility PROVIDED THAT the foregoing shall not exclude, limit, restrict or modify the rights, entitlements and remedies conferred upon any reason, or liabilities imposed by any DuluxGroup condition or warranty imposed by a Commonwealth, State or Territory Act or ordinance rendering void or prohibiting such exclusion, limitation, restriction or modification. The images shown in this brochure are examples of where DuluxGroup Powder Coatings can and have been used. The information in this brochure is correct at the time of print. [C] Copyright 2012 DuluxGroup. DGL International is a division of DuluxGroup (Australia) Pty Ltd (ABN 67 000 049 427). DuluxGroup owns the Dulux trade mark in Australia, New Zealand, PNG and Fiji. It is not associated with and has no connection to the owners of the Dulux trade mark in other countries, nor does it sell Dulux products in other countries.



ELECTRO™
POWDERCOAT RANGE





the electro 2 look

Unlike traditional anodic deposition finishes which are restricted to aluminium, architects, designers, and colour consultants will love the flexibility and freedom the Electro™ range palette of colours offers. With relative ease, Electro™ powder coatings can be applied to a wide variety of substrates such as aluminium, steel, and galvanised metal, making perfect colour co-ordination possible across many different construction elements, fixtures, and fittings.

new fashion colours

The sophisticated technology behind the Electro™ range palette of colours, ensures unparalleled colour consistency on application, eliminating "mix and match" fabrication issues that are common with traditional anodic finishes. The unique Electro™ powder coating technology also makes it possible to have an extended range of colours beyond what has been traditionally available.

For the traditionalists who like the tried and proven, the popular colour shades of Silver Reign, Medium Bronze, Sensational Champagne, Dark Bronze, Fresh Gold and Black Ace are all an integral part of the Electro™ range colour palette.

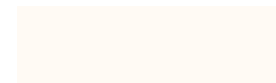
For the modernists however who are looking for something fresh and new, the Electro™ range palette of colours has been extended to include the camellions Poyle and Blue Gold, the brights Blueit, FRed, Canary and Bright Spark and the subtleties of Tiberius, Green Lantern, Blue Night, Clean Linen and Flat White. These new "Electro™ Look" fashion colours have been specifically selected and are designed to enhance modern building styles, and to complement modern internal decoration trends.

In addition to the ex-stock Electro™ range, palette of colours, made to order shades are also possible. Please contact us with your request.

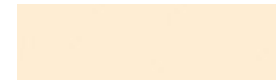


MODERN

Flat White 9061200F
RGB 236 240 237 LRV 86%



Clean Linen 9061302K
RGB 219 219 212 LRV 70%



Venerable Silver 9067621K
RGB 125 127 128 LRV 21%



Canary 9062209K
RGB 234 188 69 LRV 54%



Bright Spark 9062205K
RGB 226 165 62 LRV 43%



FRed 9064164K
RGB 178 66 66 LRV 14%



Tiberius 9062210K
RGB 109 94 65 LRV 12%



TRADITIONAL

Silver Reign 9067614K
RGB 170 175 173 LRV 42%



Sensational Champagne 9063187K
RGB 148 138 125 LRV 26%



Fresh Gold 9062208K
RGB 150 131 107 LRV 24%



Burnished Copper 9068185K
RGB 93 75 71 LRV 8%



Brilliance 9068281K
RGB 112 102 90 LRV 14%



Blueit 9065302K
RGB 40 117 146 LRV 15%



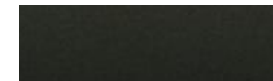
Blue Gold 9065301K
RGB 111 128 122 LRV 20%



Poyle 9065304K
RGB 114 105 109 LRV 15%



Green Lantern 9066342K
RGB 76 81 72 LRV 8%



Blue night 9065303K
RGB 67 68 71 LRV 6%



Medium Bronze 9068183K
RGB 103 93 80 LRV 11%



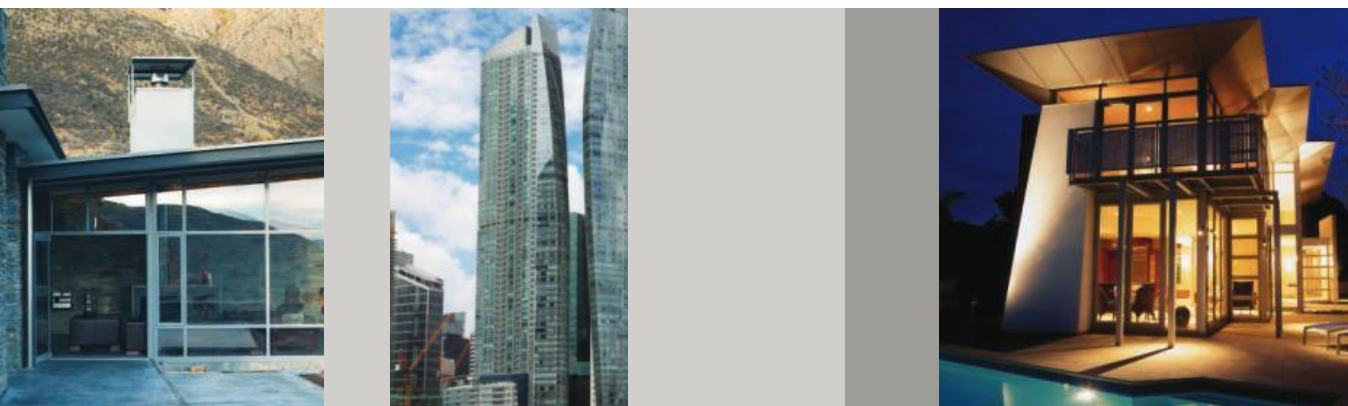
Dark Bronze 9068184K
RGB 77 69 63 LRV 6%



Black Ace 9069116F
RGB 59 60 60 LRV 4%



Colours shown are as close as modern printing processes allow.



earth friendly

No liquid chemicals, solvents, or caustic solutions are used in the manufacture of the Electro™ range of powder coatings. Electro™ powder coatings have a negligible VOC content. They are PVC free, formaldehyde free, heavy metal free, TGIC free, and they are recyclable. Electro™ powder coatings have an extremely low impact on humans, animals, and the environment.



guaranteed to last

Made from high durability, UV resistant raw materials, the tough yet flexible Electro™ range of powder coatings, when applied by a "registered applicator" on architectural aluminium, can carry a 20 year, exterior durability, performance warranty. The Electro™ range of powder coatings are suitable for use in a wide variety of climatic conditions from cold to hot, and humid to dry environments.

Besides their excellent exterior durability, compared to traditional anodic type finishes, the Electro™ range of powder coatings have superior anti-staining properties. The Electro™ range of powder coatings are resistant to staining from the likes of wood tannins, and can thus be used with confidence in conjunction with timbers such as cedar.



Mortar splashes cleaned off while still "wet" will not damage the Electro™ coated surface or leave an ugly white stain.

In situations where "run off" marks may occur, and/or air borne dust and dirt accumulate, simply wash with warm soapy water using a car wash brush or similar. In the unfortunate situation where serious damage occurs to an Electro™ coated surface the damage may be easily repaired in-situ using an approved paint system. Please refer to the "Use and Care" brochure for more information.